



MHA Ebola Response Drive September-October 2014

**MY HEART'S
APPEAL, INC.**
EVERYONE CAN BE **PRODUCTIVE**

For more information please visit us online www.myheartsappeal.org.

The mission of **My Heart's Appeal** is to facilitate the establishment of quality training and employment for teenage and adult persons with disabilities in West Africa. We now service in Liberia, about one hundred individuals with intellectual and developmental delays in the Connie Thrash McGoodwin Vocational Training Hub, Bigma's Care Place Respite Care and Down Syndrome Association of Liberia.

We need you as we continue on our campaign to raise \$286,929.00 to purchase land in Liberia to build our campus. Also, in support of the families we service, we will be collecting needed items to send to Liberia for preventive measures to help combat the deadly Ebola virus in the country. We will be accepting non-perishable food, hygiene-first aid items and monetary donations to help with shipping, bulk items - rice, faucet bucket (to be purchased in Liberia) and Pasture for the Sheep Land Fund Drive.

Donations Categories: (Store Specific Brands)

Non-Perishable Food

Quaker Oats 1lb 20z can
Yellow Corn Meal (Enriched) 2lb bag
Sugar 4lb bag
Dry Beans 16oz bag
Ramen Noodles Packets 30z
Peanut Butter 16oz
Cooking Oil 48oz
Mac & Cheese 5.5oz-7.25oz box
Luncheon Meat, Spam, Corn Beef
Sardines, Salmon, Tuna, Mackerel

Hygiene Items

Bar Soap
Anti-bacteria Liquid Hand Soap 7.5oz
Hand Sanitizer 8-10oz (60% alcohol-based)
Antibacterial Hand Wipes
Chlorine Granular Powder

First Aid

Thermometer
Loperamide (Anti-Diarrheal) 2mg; 12-24 tab
Ibuprofen (Advil) 200mg; 24 tab
Acetaminophen (Tylenol) 500mg; 40 tab
Aspirin 325mg; 175 tab
Stomach Relief 262mg; 40 cap
Children (Cold & Fever Remedies)

Monetary

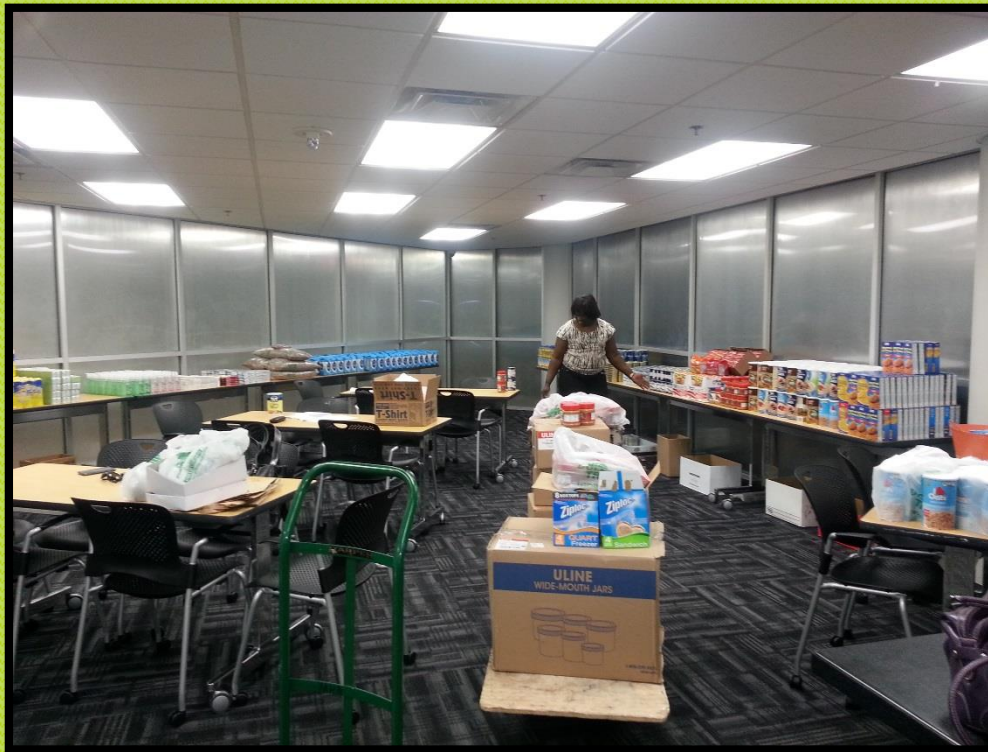
Shipping Cost (Merchandise Considered)
Rice 25lb Bag \$16.50
Faucet/Lid/Bucket 5gal \$15.00
Land Fund Drive

** Note: Plastic, paper or canned container packaging preferred*

Bill Brollier, Rotary Club North Oklahoma City



My Heart's Appeal, Inc.



My Heart's Appeal, Inc.



Macaroni & Cheese
Quaker Oats





Peanut Butter
Noodles



Mackerel
Tuna Fish
Sugar





Sardine
Canned Meat



Vegetable Oil
Beans



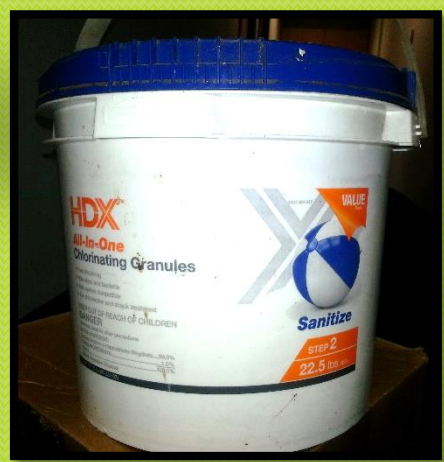


Anti- Diarrheal
Thermometer



Aspirin
Hand Sanitizer





Anti-Bacteria Wipes
Bar Soap
Chlorine Powder



My Heart's Appeal, Inc.







My Heart's Appeal, Inc.



Station One Bag Doubling



Station Two Container Capping



Station Three Labeling



Station Four Chlorinating Granules





Station Five Pinto Beans

Station Six Bar Soap Containment





Station Seven Bag Stuffers & Tiers



Doug Moore, Rotary Club East Oklahoma County



University Central Oklahoma Students & Church of the Servant Oklahoma City



My Heart's Appeal, Inc.





University Central Oklahoma Students Oklahoma City

My Heart's Appeal, Inc.



Station Eight Close Boxes



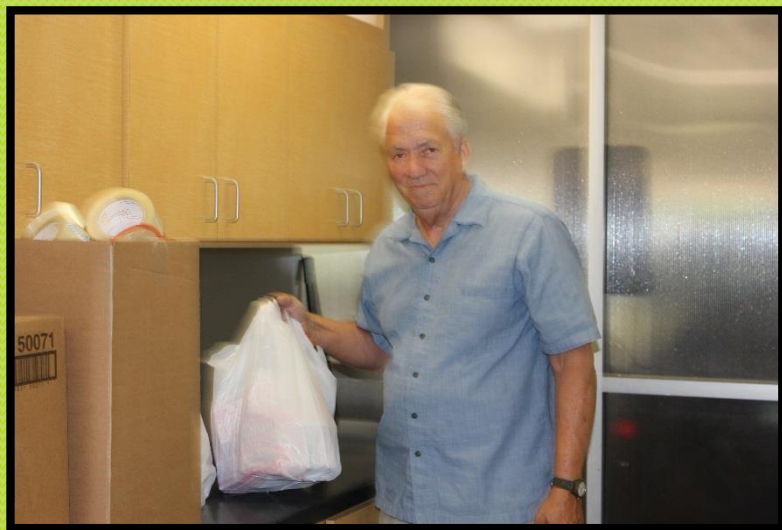


Station Nine Movers



My Heart's Appeal, Inc.





My Heart's Appeal, Inc.



My Heart's Appeal, Inc.



Station Ten Shipping

My Heart's Appeal, Inc.





My Heart's Appeal, Inc.